



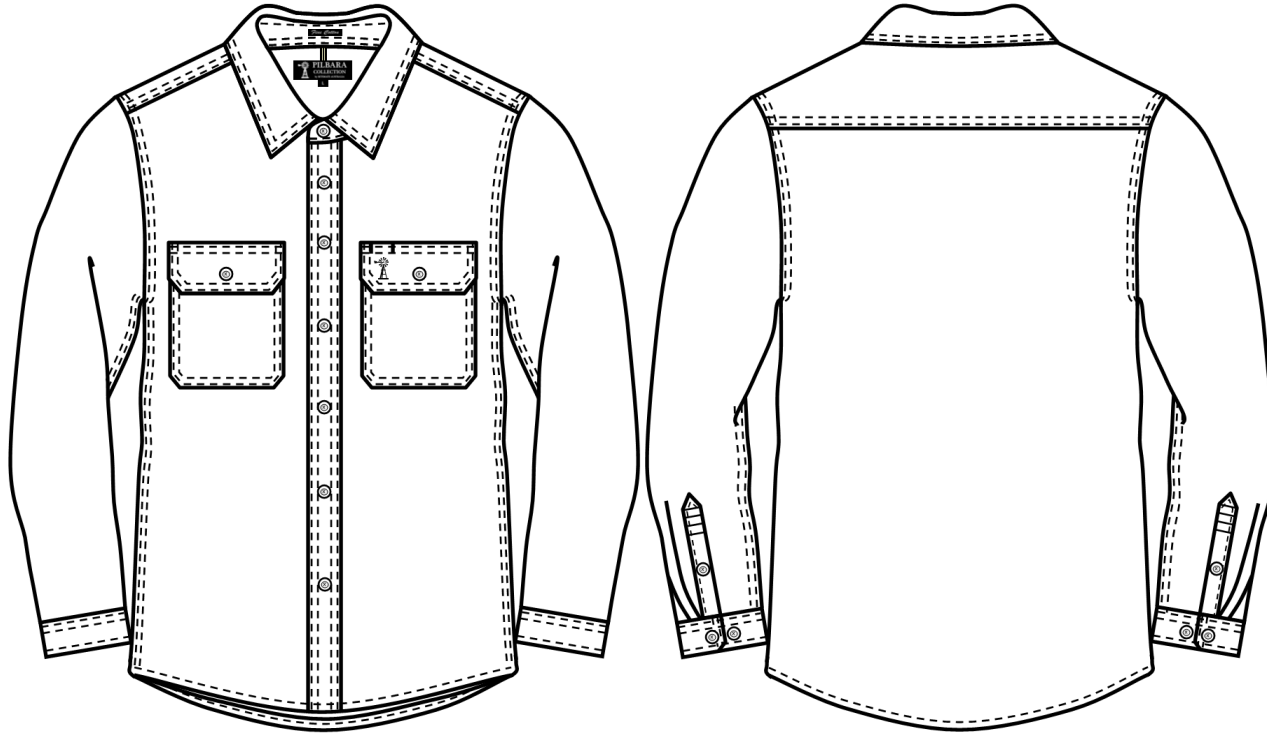
PILBARA COLLECTION
by RITEMATE AUSTRALIA

RMX

Pilbara Collection Shirts

RMPC004 Men's Front Flap Dual Pocket, Classic Fit, Long Sleeve Shirt, Y/D Check

COMMERCIAL IN CONFIDENCE



Features

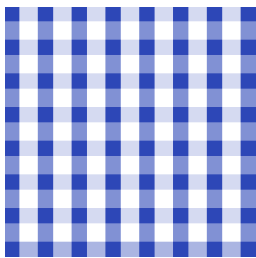
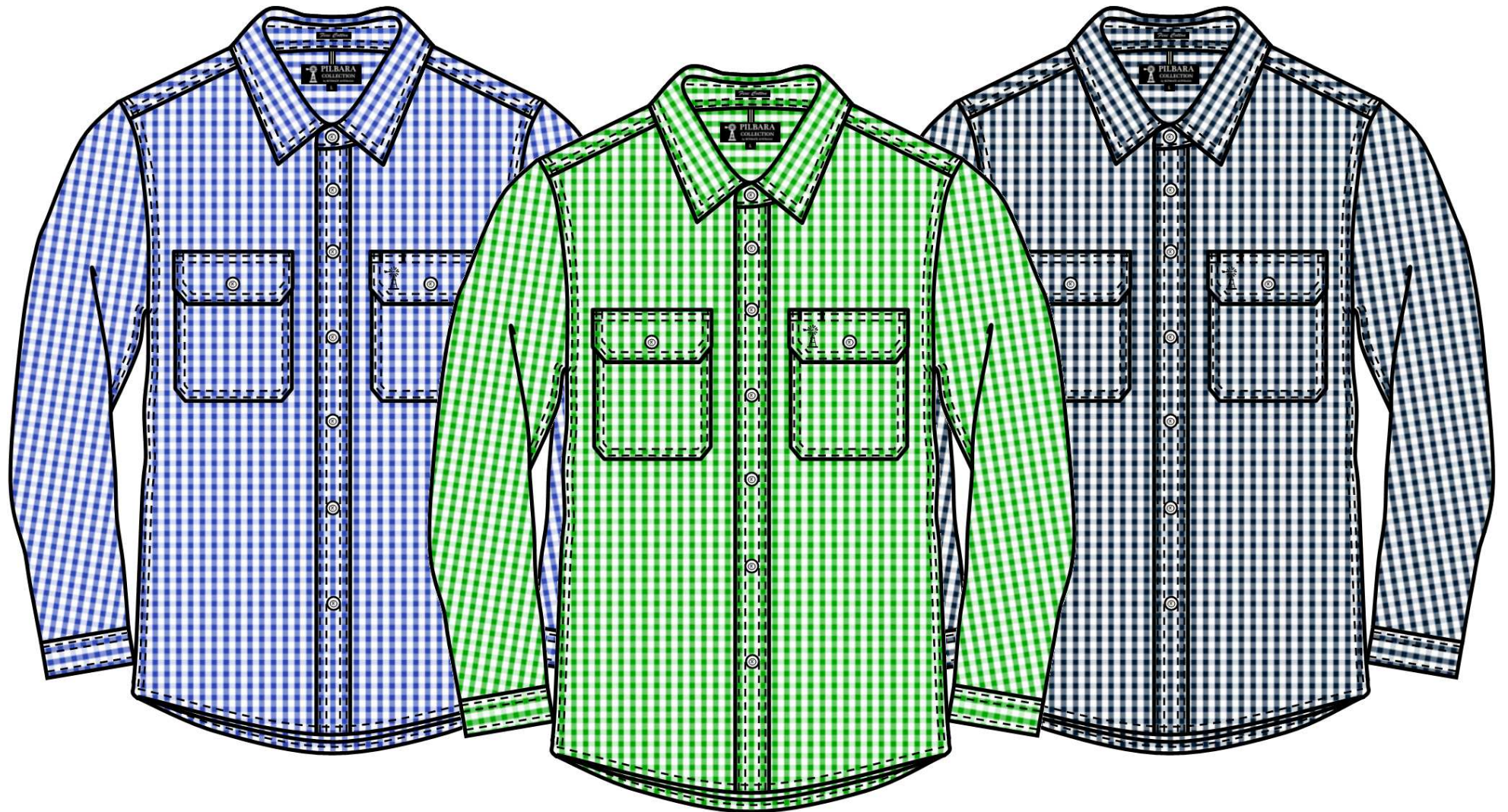
- 100% Cotton Premium Quality Mercerized
- Classic Check Design
- Classic Fit Styling, Front Flap Dual Pocket
- Supreme Soft Hand Feel
- "Windmill" Embroidery
- Clear White Button

Fabric: Crafted from 100% High Count, Easy Care, Fine Cotton, 130gsm, Yarn Dyed Check, Peach Finish, Garment Wash

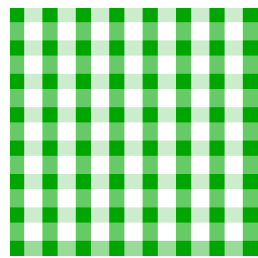
Size Range XS – 5XL

Fabric Quality

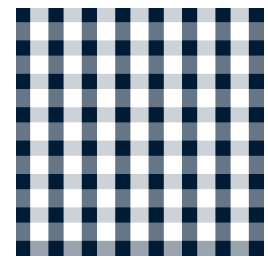
Dimension Stability		+/-3%
Colour Fastness to Washing	Colour Change	4
	Colour Staining	4-5
Colour Fastness to Rubbing	Dry	3-4
	Wet	2-3
Tearing Strength	Warp	>=10 min N
	Weft	>=7 min N



Blue-White mini check



Emerald-White mini check



Navy-White mini check

Colour

Blue-White mini check

Emerald-White mini check

Navy-White mini check

Measurement Table

Major Points	XS	S	M	L	XL	2XL	3XL	4XL	5XL
1/2 Chest	49	52	55	59	63	67	71	75	78
Centre Back Length	80	81	82	83	85	87	89	91	93
Sleeve Length	62	65	67	68	69	70	71	71	71
Shoulder Width	42	44	46	49	52	55	58	61	63
Pocket Dimension	Width 13.5 x Depth 16.5cm								

